

floorify®

PLANKS & TILES



BEAUTIFUL AND EASY

ENG | 2023-24



F019

YOUR STYLE, YOUR FLOOR, YOUR HOME

Just like you, we love beautiful interiors and floors that almost unnoticeably create that warm feeling of home. The moment when you pour a delicious drink, put on your favourite playlist and enjoy the good life with friends, family or children. That is living as it should be: pure, beautiful and carefree with a Floorify floor tailored to your home and your life.

At home you highlight your personality. Whether you are playful, enthusiastic or serene: your interior reflects that. Which is precisely why we are proud to present our collection of Floorify floors. Because they are so versatile, can take more than a knock or two and combine the unique charm of wood, concrete or natural stone with unparalleled ease of use. This is the best of many worlds. We are convinced of that already, and now it's your turn. Discover it for yourself.



WHAT WE REPRESENT



Beautiful

01 Natural beauty

Colours with character
Natural, matte textures
Ultimate plank variation
Subtle grooves



02 Large in size

Complete collection
XL planks and big tiles
Eye-catching herringbone

03 A sleek finish

Skirting boards and profiles
in the same colour
Planks and tiles that click
together seamlessly
20x20m profile-free

Easy

01 Strong

Stain resistant
Shock resistant
Stable, limited expansion
Can be placed in direct sunlight
Warranty up to 25 years

02 Waterproof

100% waterproof to the core
Wet maintenance possible

03 Comfortable

Silent
Soft and warm on the feet

04 Ideal for renovation

Thin
Cut with a utility knife
Click system: floating installation
on a Floorify underlay
On almost any surface, without
preparation
On underfloor heating and cooling

05 Sustainable

Long-term use
Energy-efficient
Designed to reuse & recycle



NATURAL BEAUTY

RIGHT DOWN TO THE DETAILS

The natural look of wood, that is what makes your Floorify floor so unique. Authentic colours, the soft shine of an oiled floor, a subtle edge finish, natural plank variation and a natural, brushed structure that always feels warm. Each plank is finished to perfection. Because true beauty lies in the details.

Colours with character

Whether you choose planks, herringbone or tiles, the **colours** of your Floorify floor are **authentic, warm and very natural**. Timelessly beautiful, yet in line with the latest interior trends. At Floorify, you can always choose a floor that suits your interior and reflects your character.

Playful variation

Our biggest inspiration? Nature. There, you rarely find repetition or set patterns. Playfulness and variety abound. That is why Floorify floors have **many different planks**. And that provides a very natural look.



F100



F100

You feel what you see

Our click floors do not need gloss to shine. What's more, it's the **matte finish** that provides a natural look. You can see the grain and the knots in the mild morning sun. And you can feel them, when you go to get that first cup of coffee of the day barefooted. A very **authentic look and feel**, that is the ultimate Floorify experience.

Into the groove

Subtle grooves accentuate the size of the planks and thus contribute to the authentic wood look of your Floorify floor. And you don't have to worry about maintenance. The grooves are easy to clean. Even after spilling your glass of wine.



F100



LARGE IN SIZE

Versatile and complete

The grandeur of wide planks, the classic elegance of a herringbone floor, large tiles in a concrete look for a subtle industrial touch,... Floorify has no standard sizes. We create each product in a way that it fits perfectly into your interior. Floorify? It's a **complete collection** and wide in variety.

Eye-catching herringbone

Love at first sight. Does that even exist with floors? Oh yes! The youngest member of the Floorify family is the **herringbone floor**. The floor radiates the atmosphere of chic mansions. Floorify made a playful and unique version of it. We also consciously opted for individual planks that you simply and quickly click into a beautiful herringbone floor. It gives your interior that little bit more allure.



Bigger and more daring

Extra long, extra wide and a particularly natural effect. Meet the XL planks (no less than 2 m long!) and big Floorify tiles that measure 60 x 90 cm. **Unusually large sizes** for a maximum experience of each room. Their exceptional dimensions ensure that every room looks more spacious. Think big! In that, we're really unique.



F001 + F023

A SLEEK FINISH

For a sleek look

With most click floors, you have to install transition profiles at regular intervals, certainly when transitioning between different rooms. This is not necessary with Floorify: our floors are extremely stable and retain their shape. This allows you to install up to **20x20 m profile-free**.

Do you want to combine several floors in one space completely seamlessly? You can! Floorify **planks and tiles can be clicked together without profile**, resulting in a lengthwise seamless connection.

The end result is a **modern and sleek floor surface** that creates tranquillity and gives a wonderful feeling of space. This seamless look not only responds perfectly to current interior trends, but also saves time when installing. Aperitif, anyone?

Well matched

The perfect match for your floor? **Skirting boards and profiles in the same colour and design**. So no more painting of skirting boards! Floorify has the right finish for every floor, in the same colour, and equally wear and water resistant. Did we mention that details really make the difference?



F001 + F023



F017 + H017 + E017

THE STRONGEST AT HOME

Having fun is the essence of life. And that accidents happen sometimes, is something you will gladly put up with. This is exactly why our floors are **extremely shock and stain resistant**. With an **extra thick protective layer**, an innovative top layer with anti-stain technology and the unique Floorify Rigid Core for a **stable, strong and shockproof core**.

Why? Because life's a party. Because as a parent you don't want to have to worry about children playing, dirty feet or spilled orange juice. Want to let the sunshine in too? No problem! Our tiles and planks can be positioned in direct sunlight without having to worry.





LIKE A FISH IN WATER

Floorify floors are **water resistant**. Not just a bit, completely. Let your living space, bathroom and bedroom seamlessly merge into one another: Floorify is at home everywhere.

The ease of use and versatility you get for free. Both for the water splashes from the shower and that spilled gin and tonic.

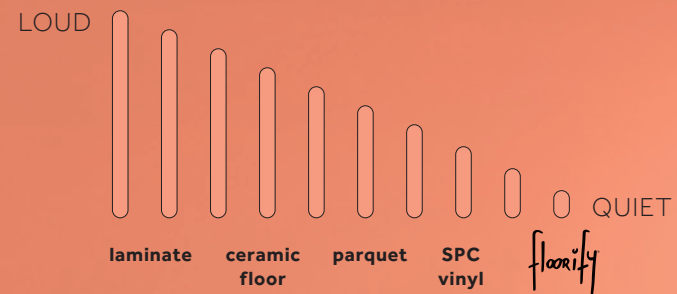
SO COM-FORTABLE

IT MAKES YOU SPEECHLESS

Bring your home to life with people and music, and discover the ultimate in floor comfort. The smart combination of the **sound-absorbing Floorify floor** with a Floorify underlay creates a wonderfully **soft floor surface** and an **acoustic layer**.

The result? A warm floor that always feels cosy and absorbs more than 21 decibels. This means you can enjoy the silence at any time, even when your teenage daughter is practising her latest dance moves.

WALKING SOUND





RENOVATION WITHOUT THE MESS

Floorify can be clicked onto almost any surface, without preparation. Yes, even over those ugly old tiles. **No demolition, no dust and no hassle.**

Floorify planks and tiles click together easily. You lay them floating (on the Floorify Comfort or Performance underlay) with no need for glue. Because the floors are so thin, you usually don't even need to trim your doors. You can simply cut your floor to size with a utility knife. **Cut, click and done!** Without anyone needing to be bothered by noise or dust.

FLOORS FOR FUTURE GENERATIONS

We want to make the world a better place with Floorify, today and tomorrow, which is why our floors are sustainable, energy-efficient and completely ready for the circular economy.

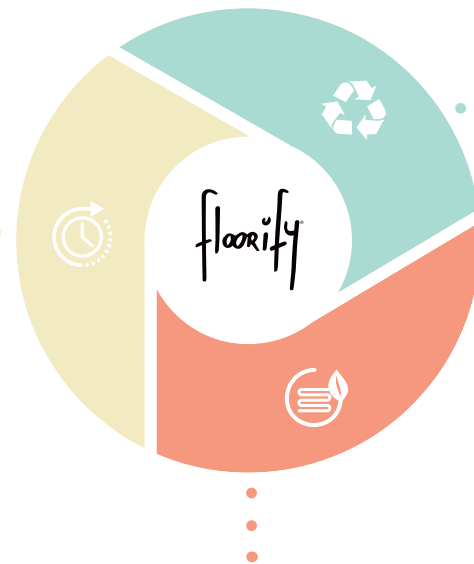
Maximum longevity

Did you know that we offer a 25-year warranty on your floor? And even 30 years if you install it on our Performance underlay? And we know what we're doing, because we're certain that your floor will have a long and happy life. This is because at the heart of our Floorify products is the unique Floorify core: a plastic that lends itself perfectly to long-term sustainable applications. This unique material is **extremely strong, low-maintenance** and has a **loooooong life**. If you choose Floorify, you choose a sustainable and durable floor that will remain beautiful and in top form for decades to come.

A bit of extra love = a great many more years

With the right maintenance products, you can even extend the life of your floor. Without fuss or scrubbing, of course. Because Floorify is just the easiest at home. For every cleaning situation, we came up with a **cleaner** that does what it is supposed to do - clean like the best! - but which simultaneously extends the lifespan of your floor.

When it's time for a clean, pull out our pH-neutral cleaners **Conny** or **Conny Turbo**. And if your floor does begin to show natural signs of ageing, superficial scratches or streaks, our floor rejuvenator **Conny Care** not only makes them less visible, its anti-ageing formula also adds a protective layer to your floor. This way, you yourself add extra years to its life.



Economical

Floorify stands for **energy-efficient** flooring. Thanks to its minimal thickness, low thermal resistance and high density, Floorify can conduct heat with ease. The ideal combination with your **underfloor heating and cooling**. Definitely in combination with the new Performance underlay*. It goes all the way for **maximum heat conduction**, so your underfloor heating can achieve **optimum efficiency** and save you energy.

**Read more about the new Performance underlay on page 52.*

Designed to reuse & recycle

Even at the start of the design process, we're already taking the life-cycle of our product into account. Each floor is designed by us to last as long as possible, to be reused and, at the end of its useful life, to be easily recycled. By applying a circular approach, we conserve natural resources and create a sustainable world for future generations.

REUSE

Floorify is installed **floating**, without glue, so you can easily unclick it and move house with it. Just like your furniture gets a second life, you can also use your floor in your next dream home.

RECYCLE

Floorify is **100% recyclable**. And we're proud of that, because in the world of floor coverings, it's far from commonplace. Most floor coverings are either glued into place or they are hybrid products, consisting of several layers of different materials and impossible to recycle. Floorify wanted to be different. That's why we take recycling into account - even at the design phase.

Our **homogenous floors** consist of **just one material** that does lend itself to recycling. **Floor and underlay** are also laid **completely separately** from each other, so that they can be recycled apart from each other perfectly. And because every little bit helps, we also recycle our own waste in new floors during the production process.



Do you have offcuts left over after installing your floor? Stop! You don't have to throw them away. Take them back to your nearest Floorevive retail point. You can then be sure that they will be recycled and you yourself will be helping to close the circle.

Currently available in Belgium, the Netherlands and France. Visit our website for an overview of all stores with a Floorevive collection point.

Did you know that Floorify...

...is A+ certified? This means that we came top of the class after a rigorous series of tests for in-door air quality.

...is plasticizer-free? Plasticizers are chemical substances used in the production of flexible vinyl floors. Because Floorify floors have a rigid core, they are plasticizer-free.

...is safer than safe? Floorify effortlessly complies with all European directives (REACH) regarding the use of hazardous substances. The product contains no glue, melamine or formaldehyde, and mustn't be glued either. So no worries about harmful VOCs. At '<10 µg', Floorify is 100x better than the European standard.

...is made from the most carbon-friendly plastic? Much less of fossil fuels is used in the production of vinyl than in other plastics.



OUR STORY

In 2016, an innovative product rocked the flooring world. A thoroughly Belgian brand that unites the best of both worlds: the warm appearance of natural materials with ultimate ease of use. Including extra shock, stain and water resistance. Enter: Floorify!

"To reinvent the floor". The crazy dream of Floorify co-founders Marie Callens and Pieter Buyck. And that's exactly what they did. Marie explains, "We thought it was a shame that as a builder or renovator, you have to make the same choice over and over – either you opt for a floor that you really like but that is anything but practical, or you opt for something more user friendly while compromising on design. We didn't want to have to choose between attractive and easy. We wanted them both, in one fantastic product."

THE MUM IN ME THINKS PRACTICALLY: MY FLOOR MUST WITHSTAND MY LITTLE TEARAWAYS. NOT FOR JUST A BIT, BUT FOR A LONG TIME.



The revolution of rigid vinyl

In 2016, Marie and Pieter – who were also once professional colleagues at a major international flooring company – decided to brave it and establish Floorify. The duo have only one mission – to conceive and design the perfect floor. Pieter explains, "In our previous roles, we developed a love for high-quality floors. But we knew one thing, that things can be better, more attractive, more sustainable and more straightforward. With Floorify, we wanted to pull out all the stops and to create a floor that was so innovative that it would turn the whole industry upside down." And that's what they did. By being the first in Europe to combine rigid vinyl planks and tiles, Floorify instantly established its name as a unique innovator.

The Floorify revolution has not escaped the notice of the rest of the world either. As the icing on the – admittedly already pretty good-looking – cake, Floorify has also received the Innovations at Domotex label in Hannover, thus making it a gold-medal winner at the "Olympic Games for Floors". Pieter explains, "With that we've not only seen a rapid expansion in our range and national and international customer base, but also managed to gather a great team of fellow floor enthusiasts around us (laughs). Our Floorify team is one with a slight twist, but cut from the right materials."

For interior design lovers and parents

"We just can't help it," laughs Marie. "We just keep on coming up with new ideas." There were a great many Floorify innovations, one after the other. Marie explains, "Terrazzo, ceppo, herringbone or vintage bluestone – I'm a huge interior design fan and I'm crazy about all sorts of floors. I love nothing more than translating interior design trends into beautiful, low-maintenance and super strong Floorify floors. A floor that you can live on, dance on, spill things on and put muddy feet on. Floorify is a brand for interior design lovers and parents. Our floors need to be 100% 'kid-proof'. Not for just a bit, but for a long time."

Take your floor with you

Marie's eye for design goes hand in hand with Pieter's technical knowledge. For example, Marie designed the innovative collection of XL planks, which are the longest on the market at two metres. The authentic character of wood is beautifully displayed in this exceptional format. When you ask Pieter about the density and tensile strength of Floorify, his smile appears spontaneously. "I get a buzz from materials and possibilities. Thanks to the unique rigid core and the innovative production process, with Floorify we solve all the traditional problems of click vinyl and laminate in one go. Now that's cool."

Floorify is silent, warm, waterproof and easy to lay on just about any surface. Even without preparation. Pieter explains, "It's a particularly renovation-friendly and durable floor – you can install Floorify floating, over your existing floor, so there's no demolition work. And since you don't have to glue Floorify to the underfloor, you can take your floor with you if you move, just like your furniture. How sustainable is that?"

Happy to help

Of course, Floorifans deserve the best service. Marie explains, "With Floorify, we're aiming super high. We're totally committed to the 'wow' experience, and we hope that our customers really feel it." Floorify chooses its points of sale very carefully – you'll only find Floorify at locations where specialists can answer all of your questions. You can also see and feel the floors, and all of their details. If you'd rather view the collection at home, you can order free samples on the website. The website also has some handy installation videos and tips and tricks. Marie explains, "With our comprehensive online help centre, you can get an answer to your Floorify questions super quickly. We're just a click away, and always happy to help. You're always welcome to come and chat to us about floors!"

BEFORE AND AFTER

FROM COLD TILES TO A COSY
COCOON THANKS TO FLOORIFY



Photos: © Jonah Samyn

F023

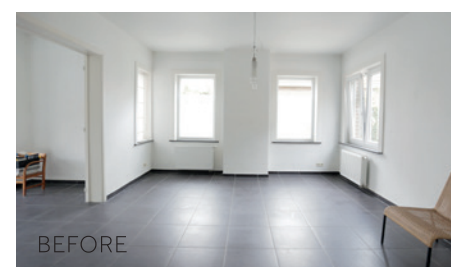
Floorified!

Who? Simon (27), Sarah (24) and daughter Maud (18 months)

What? Renovation of a semi-detached property in Lovendegem, Belgium.

Situation? Sarah and Simon are moving from their apartment to a large house with a garden, where their daughter will have her own cosy room.

New floor? Floorify!
Living room and bathroom: F100 Seychelles
Dining room and hall: F023 Verona



TIP

Floorify can be installed on top of the existing tile floor

No crushing, no dust, no hassle. Just install a new floor on top of the old one. Floorify planks and tiles just click together like laminate planks do. You install them floating (on the Floorify Comfort or Performance underlay) and do not have to glue them. You simply cut them to size with a knife!



F023 + F100

Floorify advantages according to Simon & Sarah:

1 / It is the perfect floor for messy households

"In terms of maintenance, a parquet floor or natural stone floor simply does not suit us, as a family. In no time a plate of spaghetti sauce would end up on it, I know that I will never leave my high heels at the front door and our daughter would probably pour her cup of water over it every day. A parquet floor or natural stone floor is simply not suitable for the way we prefer to live: a bit messy, but carefree. Floorify is."

2 / The floor is water and mess-resistant

"We were able to install the Floorify floor without any problems in the dining room, but also in the entrance hall (wet, dirty feet: no problem), living room and bathroom. And under the high chair where our daughter deposits a daily impressionistic artwork made of beetroot purée, crumbs, water and soggy banana chunks. The floor was installed on our ground floor without profiles and thus creates a sense of space."

3 / Accidents are okay

"The top layer of Floorify floors has a hyper-protective film through which, in addition to water, no stubborn stains such as permanent marker or nail polish can pass through. Simply wipe with a piece of cloth and it's gone. We know that, because we have already tested it once by accident. In addition, you can also drop a heavy object on it, without leaving a dent. Which is also something we have already tested by accident."

4 / It looks real

"Nobody realises that it is not actually a real parquet floor. The wood look is very convincing."

5 / It's easy to clean

"With the vacuum cleaner. With the mop. With some water, a cloth and a pH-neutral floor cleaner."

6 / Vinyl is quiet

"No orchestra of trampling children's feet or tapping high heels: Floorify is comfortable to walk on."

7 / ... and warm

"Because it immediately assumes the ambient temperature, Floorify always feels warm under your feet (not uncomfortably cold, like tiles or laminate)."



F023 + F100



F100



F318

**Do what
you love,
love what
you do**



F032



F318





F096

**Rain is just
confetti
from the sky**



F023



F031

**It's
the season
to sparkle**





F030

**Do more of
what makes
you happy**



F095



F028



SEE AND FEEL FOR YOURSELF?

ORDER FREE SAMPLES

Would you like to see and feel the unique quality and beauty of our floors for yourself? **Order up to 3 free samples** of your favourite Floorify floors and discover which colour suits your interior.

You can easily order the samples at [floorify.com](https://www.floorify.com)



**Order free samples
at www.floorify.com**

THE COLLECTION

XL PLANKS
2000 x 240 mm

LONG PLANKS
1524 x 225 mm

PLANKS
1219 x 178 mm

HERRINGBONE
750 x 125 mm

**SMALL
TILES**
305 x 610 mm

**BIG
TILES**
600 x 900 mm



HERRINGBONE



F317

A timeless eye catcher

Love at first sight. Does that exist with floors? Oh yes! The youngest member of the Floorify family is the herringbone floor. The floor radiates the atmosphere of chic mansions. Floorify made a **playful and unique version** of it. Floorify also consciously opted for **individual planks** that you simply and quickly click into a beautiful herringbone floor. It gives your interior that little bit more allure.



F300 HIRAME



F301 UNI



F306 BURI



F317 UNAGI



F318 TORO



F319 ANAGO



F333 IKURA

NEW

plank dimensions | 750 x 125 x 4,5 mm
number of planks per box | 24
number of m² per box | 2,25
usage class | 33
wear layer | 0,55
installation | click - floating and only in herringbone pattern
number of joints | V4
warranty for residential use | 25 years / 30 years (Performance underlay)
warranty for commercial use | 5 years

NEW = available as of June 2023

XL PLANKS



Big, bigger, biggest

Use every inch of your space and make your home bigger with the XL planks by Floorify. These planks are **longer and wider than any standards**, for maximum experience of the area. Lovely, that feeling of space!

The seemingly endless visual lines make rooms look bigger. This way, every room comes into its own even more. The **subtle grooves, lifelike brushed textures and natural planks variation** enhance the authentic look of your Floorify floor.

 <p>F092 PETIT BEURRE <small>NEW</small></p>	 <p>F093 PARMESAN <small>NEW</small></p>	 <p>F094 SKYFALL <small>NEW</small></p>
 <p>F095 FRANGIPANE <small>NEW</small></p>	 <p>F096 ILE DE RÉ</p>	 <p>F097 MATTERHORN</p>
 <p>F098 TOFFEE</p>	 <p>F099 CLOONEY</p>	 <p>F100 SEYCHELLES</p>
 <p>F101 SABAYON</p>	 <p>F102 TEDDY BEAR</p>	<p>plank dimensions 2000 x 240 x 4,5 mm number of planks per box 5 number of m² per box 2,40 usage class 33 wear layer 0,55 installation click - floating number of joints V4 warranty for residential use 25 years / 30years (Performance underlay) warranty for commercial use 5 years</p>



F017

Pure down to the details

Floors inspired by **small details, sophisticated designs and fine wood structures** that perfectly match your lifestyle. Classic, rustic or rather progressive: you will discover a colour palette for your taste and style.

Each plank is the result of a quest for the **ultimate balance between character, colour, shine and finish**. A weathered look, a distinctive patina or rather Scandinavian streamline? Be inspired and make a choice that suits you.





INNOVATIVE TEXTURES

NEW RAWTHENTIC TECHNOLOGY

The natural look of wood is what makes your Floorify floor so unique, which is why we are presenting our innovative 'Rawthentic' technology with pride. Using the latest 3D printing techniques, we create surface **textures with unseen levels of depth**, inspired by the beauty of robust wood. The grain and every knot and crack is recreated in detail. The result is an **authentic brushed look and unparalleled natural appearance**, supported by a matt finish, subtle edging and ultimate plank variety.

This innovative technology excels in four characterful Floorify designs: **F033** Eivissa, **F034** Latte, **F035** Dolly and **F036** Goose.



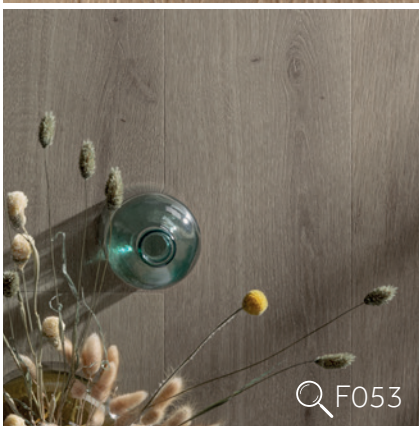










F053

The soft look of wood

The subtle brushed texture, the matte look and the soft wood design of these floors help to bring balance and calm to your interior. Whether you're looking for a rustic look, or something more modern, this collection is perfect for any interior style. The planks are also ideal for small rooms in which their elegant size has the opportunity to really stand out.

 Q F050 F050 CRÉMANT	 F051 COCONUT	
 Q F053 F053 STONEHENGE	 F055 APPLE CRUMBLE	
 F056 POPCORN NEW	 F057 WAFFLE NEW	 Q F055
 F058 CANNELÉ NEW	 F059 BUNNY NEW	<p>plank dimensions 1219 x 178 x 4 mm number of planks per box 12 number of m² per box 2.60 usage class 33 wear layer 0.55 installation click - floating number of joints V4 warranty for residential use 20 years / 25 years (Performance underlay)</p>



For a sleek look

60 by 90 cm. The extra large size makes joints virtually invisible and installation extra quick and easy. The format also responds to the interior trend of the moment: seamless surfaces with a very **natural effect**. The tiles have the same appearance as concrete or natural stone without the disadvantages. For example, Floorify tiles are **stain resistant**, there is **no risk of cracking or tearing** and the floor is **easy to install** without extensive preparation. In addition, you do not have to take drying times into account: your Floorify floor is **immediately accessible!**



SMALL TILES



For a playful effect

Are you looking for a playful effect in your room? This tile's **elegant size** provides the necessary dynamism. The interplay of lines in the joints also adds depth, making them **perfect for small spaces**, like the bathroom or toilet. If you like a **retro look**, then you will also like the traditional size.

The collection consists of the same colour palette as the Large Tiles and it is also very **easy to install**. Thanks to their handy size, you can click these tiles together in no time!



tile dimensions | 305 x 610 x 4mm
number of tiles per box | 12
number of m² per box | 2,23
usage class | 33
wear layer | 0,55
installation | click - floating
number of joints | V4
warranty for residential use |
20 years / 25 years (Performance underlay)

HOW TO INSTALL?

QUICK AND EASY!



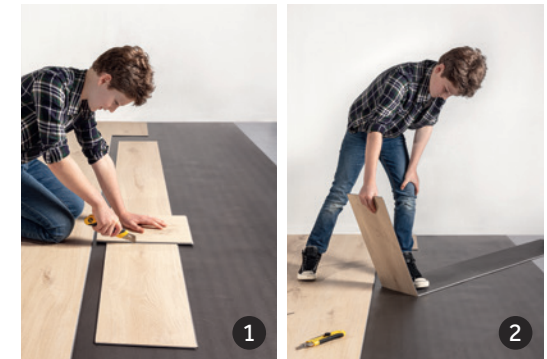
F100

Click-and-go

You can lay your Floorify floor in 1-2-... no, you don't even need 3. Just roll out the underlay, click and go. Goodbye parquet glue, hello Floorify.

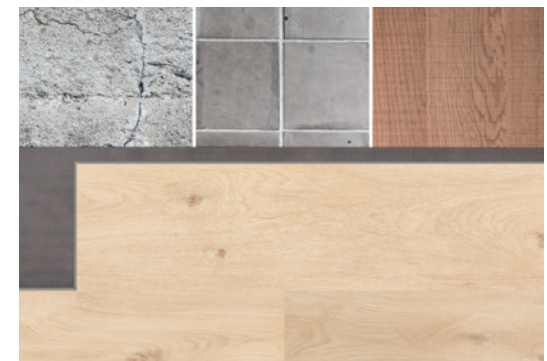
Silent and dust-free installation

Ideal for installation in apartments or for a renovation of an existing home. Simply cut your Floorify floor with a **utility knife**. No-one is bothered by noise or dust.



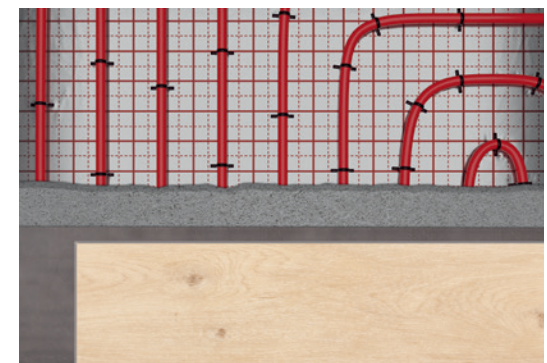
On almost any surface, without preparation

An existing floor or small irregularities? Just install **Floorify on top of it**. Even those ugly old tiles can stay there.



A perfect match for your underfloor heating

Floorify floors are thin. Very thin. That means they **conduct heat very well**. You can therefore combine them perfectly with underfloor heating or cooling. The new **Performance underlay** completes the picture: thanks to its ultra-low thermal resistance, heat can travel more easily through your floor. The result? Top performance for every underfloor heating system. Now that's energy efficient.



Detailed installation instructions at www.floorify.com

SMART ACCESSORIES

FOR A GRAND INTERIOR



Versatile skirtings

The perfect match for your perfect floor: skirtings that are as wear and waterproof as your Floorify floor. And with exactly the same finish and colour.



Sxxx
MATCHING
SKIRTING
2000 x 61 x 10mm (l x h x d)



Hxxx
MATCHING
HIGH SKIRTING
2000 x 89 x 10mm (l x h x d)



Nxxx
MATCHING
STRIP
2000 x 2 x 18mm (l x h x d)

Custom profiles

Enjoy a superior finish thanks to a complete range of custom profiles. Thanks to their minimalist and sleek design, they create an invisible transition between two separate floor sections. As intermediate, end and transition profiles. To us, it's only natural that they come in the same colour as your floor. Those details are there precisely to make the difference.



Exxx
MATCHING
END PROFILE
2000 x 10 x 31,4mm (l x h x d)



Oxxx
MATCHING
TRANSITION PROFILE
2000 x 10 x 36mm (l x h x d)



Qxxx
MATCHING
ADAPTOR PROFILE
2000 x 10 x 42,2mm (l x h x d)

		Order code	Matching skirting	Matching high skirting	Matching strip	Matching end profile	Matching transition profile	Matching adaptor profile
HERRINGBONE (750 x 125 x 4,5mm)		(Fxxx)	(Sxxx)	(Hxxx)	(Nxxx)	(Exxx)	(Oxxx)	(Qxxx)
HIRAME		F300	S100	H100	N100	E100	O100	Q100
UNI		F301	S001	H001	N001	E001	O001	Q001
BURI		F306	S006	H006	N006	E006	O006	Q006
UNAGI		F317	S017	H017	N017	E017	O017	Q017
TORO		F318	S018	H018	N018	E018	O018	Q018
ANAGO		F319	S019	H019	N019	E019	O019	Q019
IKURA	NEW	F333	S033	H033	N033	E033	O033	Q033
XL PLANKS (2000 x 240 x 4,5mm)								
PETIT BEURRE	NEW	F092	S092	H092	N092	E092	O092	Q092
PARMESAN	NEW	F093	S093	H093	N093	E093	O093	Q093
SKYFALL	NEW	F094	S094	H094	N094	E094	O094	Q094
FRANGIPANE	NEW	F095	S095	H095	N095	E095	O095	Q095
ILE DE RÉ		F096	S096	H096	N096	E096	O096	Q096
MATTERHORN		F097	S097	H097	N097	E097	O097	Q097
TOFFEE		F098	S098	H098	N098	E098	O098	Q098
CLOONEY		F099	S099	H099	N099	E099	O099	Q099
SEYCHELLES		F100	S100	H100	N100	E100	O100	Q100
SABAYON		F101	S101	H101	N101	E101	O101	Q101
TEDDY BEAR		F102	S102	H102	N102	E102	O102	Q102
LONG PLANKS (1524 x 225 x 4,5mm)								
PARIS TAN		F001	S001	H001	N001	E001	O001	Q001
BUTTER CRISPS		F002	S002	H002	N002	E002	O002	Q002
WHITSUNDAYS		F003	S003	H003	N003	E003	O003	Q003
BLUSH		F006	S006	H006	N006	E006	O006	Q006
CROISSANT		F007	S007	H007	N007	E007	O007	Q007
CHAMPAGNE		F017	S017	H017	N017	E017	O017	Q017
CIDER		F018	S018	H018	N018	E018	O018	Q018
COGNAC		F019	S019	H019	N019	E019	O019	Q019
COHIBA		F021	S021	H021	N021	E021	O021	Q021
BLACK BEAUTY		F022	S022	H022	N022	E022	O022	Q022
HONEY		F025	S025	H025	N025	E025	O025	Q025
GINGERBREAD		F026	S026	H026	N026	E026	O026	Q026
EIVISSA		F033	S033	H033	N033	E033	O033	Q033
LATTE		F034	S034	H034	N034	E034	O034	Q034
DOLLY		F035	S035	H035	N035	E035	O035	Q035
GOOSE		F036	S036	H036	N036	E036	O036	Q036
PLANKS (1219 x 178 x 4mm)								
CRÉMANT		F050	S050	H050	N050	E050	O050	Q050
COCONUT		F051	S051	H051	N051	E051	O051	Q051
STONEHENGE		F053	S053	H053	N053	E053	O053	Q053
APPLE CRUMBLE		F055	S055	H055	N055	E055	O055	Q055
POPCORN	NEW	F056	S056	H056	N056	E056	O056	Q056
WAFFLE	NEW	F057	S057	H057	N057	E057	O057	Q057
CANNELÉ	NEW	F058	S058	H058	N058	E058	O058	Q058
BUNNY	NEW	F059	S059	H059	N059	E059	O059	Q059
BIG TILES (600 x 900 x 4,5mm)								
SEA SALT		F014	S014	H014	N014	E014	O014	Q014
OYSTER		F015	S015	H015	N015	E015	O015	Q015
VERONA		F023	S023	H023	N023	E023	O023	Q023
TERRAZZO		F024	S024	H024	N024	E024	O024	Q024
CEPPO		F027	S027	H027	N027	E027	O027	Q027
JELLYFISH		F028	S028	H028	N028	E028	O028	Q028
COQUILLE		F029	S029	H029	N029	E029	O029	Q029
PEBBLE BEACH		F030	S030	H030	N030	E030	O030	Q030
ETNA		F031	S031	H031	N031	E031	O031	Q031
PICCOLO		F032	S032	H032	N032	E032	O032	Q032
SMALL TILES (305 x 610 x 4mm)								
SEA SALT SMALL	NEW	F514	S014	H014	N014	E014	O014	Q014
OYSTER SMALL	NEW	F515	S015	H015	N015	E015	O015	Q015
VERONA SMALL	NEW	F523	S023	H023	N023	E023	O023	Q023
TERRAZZO SMALL	NEW	F524	S024	H024	N024	E024	O024	Q024
CEPPO SMALL	NEW	F527	S027	H027	N027	E027	O027	Q027
JELLYFISH SMALL	NEW	F528	S028	H028	N028	E028	O028	Q028
COQUILLE SMALL	NEW	F529	S029	H029	N029	E029	O029	Q029
PEBBLE BEACH SMALL	NEW	F530	S030	H030	N030	E030	O030	Q030
ETNA SMALL	NEW	F531	S031	H031	N031	E031	O031	Q031
PICCOLO SMALL	NEW	F532	S032	H032	N032	E032	O032	Q032

THE QUIET STRENGTH OF OUR DREAMTEAM

Comfort underlay

A soft floor surface, additional acoustic damping and suitable for underfloor heating and cooling. Yes, our Comfort underlay does exactly what its name suggests and needs less than 2 millimetres for that.

The technical characteristics reinforce the power and the capabilities of your Floorify planks. Together they form an inseparable duo.

U001 FLOORIFY COMFORT UNDERLAY
15m² per roll - 2mm thick



U001

EASY TO MAINTAIN

EASY TO LOVE

Conny

A quick clean to remove dirt, grease or footprints? Conny maintenance product is your best friend. If you like to clean, then this product is the best of the class.

M001 FLOORIFY CONNY - 1L

Conny Care

A rejuvenation treatment for your Floorify. Superficial scratches or streaks and natural signs of ageing are immediately reduced. Conny Care's matt protective layer extends the life of your floor.

M004 FLOORIFY CONNY CARE - 1L



Performance underlay

Combined with underfloor heating and cooling, Performance underlay is, like its name suggests, a top performer. Because it allows the maximum of heat through, underfloor heating and cooling can work as optimally as possible, saving you energy.

Floorify in your restaurant, office or shop? This underlay is slightly harder so that it is perfect for intensive use. Even combined with a herringbone parquet, Performance underlay is number one.

The harder side of Performance underlay protects the click system extremely well, extending the life of every Floorify floor. So what do we do? We extend the warranty. When Performance underlay is used for a residential application, we extend the standard 25-year residential warranty to 30 years.

U002 FLOORIFY PERFORMANCE UNDERLAY
10m² per roll - 1,5mm thick - available as of May 2023

#FLOORIFAN

SPOTTED ON INSTAGRAM

Post your Floorify interior project using **#floorifan** and win a beautiful bouquet of flowers!



F317 @rebelle_boutique_drongen



F023 @jolie.logie



F028 @jessdegeest



F029 @fromsoofwithlove



F023 @interiorbysofievansteelant



F014 @pique.interieuradvies



F319 @noemiemeijer



F100 @marliesverschraegen



F023 @anneleen.meurs

Follow and tag us: **@floorify_com**



BUYING FLOORIFY IN YOUR AREA?

MEET OUR EXPERTS!

Whether you're planning to buy a vinyl floor or are still looking for inspiration, our network of stores is never far away. You can easily and quickly **find the best dealers in your area**. Get the best advice from real experts, see and feel the Floorify quality. And better yet: everything is arranged for you down to the very last detail.

You can find a handy overview of all dealers in your area at [floorify.com](https://www.floorify.com)



Meet
Conny



Find a store on
www.floorify.com

TECHNICAL DATA SHEET



PRODUCT DATA											
		HERRING- BONE	XL PLANKS	LONG PLANKS	BIG TILES		HERRING- BONE	XL PLANKS	LONG PLANKS	BIG TILES	
Width	ISO24337	125 mm	240 mm	225 mm	600 mm	Total thickness	ISO24337	4,5 mm	4,5 mm	4,5 mm	4,5 mm
Length	ISO24337	750 mm	2000 mm	1524 mm	900 mm	Top layer thickness	EN429	0,55 mm	0,55 mm	0,55 mm	0,55 mm
Number of panels per pack		24 pc	5 pc	8 pc	4 pc	Core	Sound reducing, robust and waterproof Floorify® Rigid Core				
m² per pack		2,25 m²	2,40 m²	2,74 m²	2,16 m²	Finish	Protected with stain resistant Floorify® Quiet Sense Technology				
Weight per pack	ISO23997	20,08 kg	20 kg	22 kg	17,6 kg	Locking method	Traditional glueless click under license of Unilin				

WARRANTY

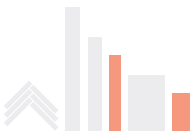
	Usage class	ISO10582	33
	CE	EN14041	DoP FF001
	Warranty	Residential: Commercial:	25 years (30 years in combination with Floorify® Performance Underlay) 5 years

TECHNICAL DATA		NORM REQUIREMENTS		FLOORIFY® VALUES
	Wear resistance	EN13329, Annex E	≥ 2000 cycles	≥ 4000 cycles - AC4
	Impact resistance	EN13329	≥ 1600mm	In combination with Floorify® Comfort/Performance Underlay: >1800mm - IC3
	Residual indentation	ISO24343-1	≤ 0,2 mm	In combination with Floorify® Comfort/Performance underlay: no visible changes
	Stain resistance	EN423	Groups 1 and 2: grade 5; Group 3: grade 4	Groups 1, 2 and 3: grade 5
	UV resistance	ISO 105-B02:1994, Method 3a	≥ 6	> 6
	Fire classification	EN 13501-1 ISO 9239-1		Bfl-s1
	Dimensional stability	EN ISO23999 6 hours at 80°C	≤ 0,25%	≤ 0,10%
	Locking strength	ISO24334	Long side: ≥ 1kN/m Short side: ≥ 1,5kN/m	Long side: > 5kN/m Short side: > 5kN/m (n/a herringbone)
	Displacement of furniture feet	ISO 16581	Foot 0,1mm/ 32kg	No changes
	Castor chairs	ISO 4918	≥ 25000 cycles: No delamination, no disturbance	OK in combination with Floorify® Comfort/Performance Underlay
	Slip resistance	EN13893 EN 16165		DS R10
	Swelling	ISO24336	≤ 18%	0%
	Thermal resistance (floor + underlay)	EN12667	< 0,15R(m²K/W)	0,0239 R24 (m²K/W) (0,0146 floor + 0,0093 Performance underlay) 0,0686 R24 (m²K/W) (0,0146 floor + 0,0540 Comfort underlay)
	Floor heating	Appropriate for all standard heating systems IN cement flooring. NOT appropriate for or tested with heating films.		
	Impact sound improvement	ISO 10140 ISO717-2	ΔLw18dB	In combination with Floorify® Comfort Underlay: ΔLlin10dB = ΔLw21dB
	Formaldehyde emission	EN14041 EN717-1		E1
	TVOC 28 days		< 1000µg/m³	< 10µg/m³
	Emissions in the interior air	Decree n°2011-321		A+

REACH Floorify® floors and accessories are fully REACH compliant

Floorify NV reserves the right to make alterations to material and structures when this serves to improve the quality

TECHNICAL DATA SHEET



PRODUCT DATA							
		PLANKS	SMALL TILES		PLANKS	SMALL TILES	
Width	ISO24337	178 mm	305 mm	Total thickness	ISO24337	4 mm	4 mm
Length	ISO24337	1219 mm	610 mm	Top layer thickness	EN429	0,55 mm	0,55 mm
Number of panels per pack		12 pc	12 pc	Core	Sound reducing, robust and waterproof Floorify® Rigid Core		
m² per pack		2,60 m²	2,23	Finish	Protected with stain resistant Floorify® Quiet Sense Technology		
Weight per pack	ISO23997	19,9 kg	17,42	Locking method	Traditional glueless click under license of Unilin		

WARRANTY

	Usage class	ISO10582	33
	CE	EN14041	DoP FF001
	Warranty	Residential use	20 years (25 years in combination with Floorify® Performance Underlay)

TECHNICAL DATA		NORM REQUIREMENTS		FLOORIFY® VALUES
	Wear resistance	EN13329, Annex E	≥ 2000 cycles	≥ 4000 cycles - AC4
	Impact resistance	EN13329	≥ 1600mm	In combination with Floorify® Comfort/Performance Underlay: 1800mm - IC3
	Residual indentation	ISO24343-1	≤ 0,2mm	In combination with Floorify® Comfort/Performance underlay: no visible changes
	Stain resistance	EN423	Groups 1 and 2: grade 5; Group 3: grade 4	Group 1, 2 and 3: grade 5
	UV resistance	ISO 105-B02:1994, Method 3a	≥ 6	> 6
	Fire classification	EN 13501-1 ISO 9239-1		Bfl-s1
	Dimensional stability	EN ISO23999 6 hours at 80°C	≤ 0,25%	≤ 0,10%
	Locking strength	ISO24334	Long side: ≥ 1kN/m Short side: ≥ 1,5kN/m	Long side: > 4,5kN/m Short side: > 4,5kN/m
	Displacement of furniture feet	ISO 16581	Foot 0,1mm/ 32kg	No changes
	Castor chairs	ISO 4918	≥ 25000 cycles: No delamination, no disturbance	Ok in combination with Floorify® Comfort/Performance underlay: no visible changes
	Slip resistance	EN13893 EN 16165		DS R10
	Swelling	ISO24336	≤ 18%	0%
	Thermal resistance (floor + underlay)	EN12667	< 0,15R(m²K/W)	0,0213 R24 (m²K/W) (0,0120 floor + 0,0093 Performance underlay) 0,0660 R24 (m²K/W) (0,0120 floor + 0,0540 Comfort underlay)
	Floor heating	Appropriate for all standard heating systems IN cement flooring. NOT appropriate for or tested with heating films.		
	Impact sound improvement	ISO 10140 ISO717-2	ΔLw18dB	In combination with Floorify® Comfort Underlay: ΔLlin10dB
	Formaldehyde emission	EN14041 EN717-1		E1
	TVOC 28 days		< 1000µg/m³	< 10µg/m³
	Emissions in the interior air	Decree n°2011-321		A+

REACH Floorify® floors and accessories are fully REACH compliant

Floorify NV reserves the right to make alterations to material and structures when this serves to improve the quality

Happy to help

Do you want to know (quickly!) how to remove beetroot purée from your new herringbone floor? Or curious why underlay is necessary and how much guarantee you get on Floorify planks? Just like you, we love the best service and so we provide a quick and accurate answer to every question. Floorify is easily accessible, thanks to our online help centre, but also through our numerous dealers and floor experts. Need help or information? Fire Away!

Help centre at
www.floorify.com



Floorify warranty

In addition to the legal guarantee, Floorify offers an additional extended warranty for customers who register their products in our warranty database.

Registration entitles customers to the following warranty:

HERRINGBONE, XL PLANKS, LONG PLANKS, BIG TILES | 4,5MM THICKNESS - CL33

Residential use: 25 years (30 years in combination with Floorify® Performance Underlay)

Commercial use: 5 years

PLANKS, SMALL TILES | 4MM THICKNESS - CL33

Residential use: 20 years (25 years in combination with Floorify® Performance Underlay)

This warranty is limited and is restricted to the warranty terms and conditions as found at www.floorify.com



Floorify NV, Kruisboommolenstraat 30A, B-8800 Roeselare
hello@floorify.com - **FLOORIFY.COM**